

# FACTORY DIRECT

*sale*



HORSTMAN  
**CHC**  
CATTLE CO.

Sunday  
October 14th, 2012  
at 1:30 PM

Held at Horstman Cattle Co.  
West Lafayette, Indiana

**Mary  
Pallen  
Angus**  
Earl Park, IN



Kirklin, IN

**Sennett**  
attle  
Waynetown, IN



Wesner Livestock  
Enterprises  
Chalmers, IN

**Sheets ChiAngus**  
West Lafayette, IN

## Welcome

*to round two of the Factory Direct Production Sale. We are obviously excited to offer a great set of cattle from a cross section of progressive and diverse breeders. Everyone should take the time to study and see what this group of producers has brought forth for your appraisal.*

*HCC is serious about standing the test of time with a great investment in facilities for this event. Our newly constructed sale facility will be complete by sale day and we look forward to hosting our marketing partners and customers for years to come.*

*We look at the drought as an opportunity to learn from a tough situation. We think that when we are blessed with rain, the people who have held on to the right kind of four legged assets will prosper. We hope and invite you all come to the Factory Direct Group to secure such assets.*

*It will rain. Our product will see all time high demand. We are in a time of all time low supply. Also after such a tough summer and especially an abnormal spring, the number of open cows is alarming. We hope you look to the Factory Direct group to find functional bred cattle to eat your precious inputs, to replace those cows that will not provide a calf for you to sell next year. If she eats she had better be bred!*

*HCC is excited to expand our list of marketing partners. Dr. Sheets and his family have been long time friends and marketing partners. Mary Patton is back to showcase her historical and efficient herd. Barry Wesner and his family have been long time family friends and customers while impacting their breed. Sennett Cattle Co. is in the heart of production agriculture and as progressive and diverse as any cattle operation in the state. Locust Hill Farms came to us with an opportunity and have been a pleasure to work with while featuring outstanding cattle with royal pedigrees.*

*There is a sale catalog in your mailbox daily this time of year. We hope you evaluate ours, ask questions, and become customers if you are not already. On behalf of the rest of the Factory Direct Group, we look forward to hearing from you and seeing you on or before Oct. 14th.*

Larry and Joe Horstman



### HORSTMAN CATTLE COMPANY

Farm: 707 E 900 N  
W. Lafayette, IN 47906

**Larry Horstman, DVM**

**Joe Horstman:** 765.426.0426

joe@horstmancattle.com

**Randy Martin, Manager:**

765.412.3660

www.horstmancattle.com



Horstman Cattle Co LLC

Lots 1-16

## Factory Direct Partners



Lots 17A-22

**Dr. Charles Bush**  
**Dr. Jay Davis & Steve Shoup**  
5931 E. State Rd 38  
Kirklin, IN 47050  
Steve's Cell (765) 652-3275  
(765) 325-9251  
(765) 438-4531  
ssshoup@sbcglobal.net

### **Mary Patton** **Angus**

Lots 23-26

**Mary Patton**  
2064 N 600 W  
Earl Park, IN 47942  
(219) 474-6716

### **Sheets ChiAngus**

Lots 27-38

**Dr. Rob & Becky Sheets**  
**Family**  
8250 US Hwy 52 W, W.  
Lafayette, IN 47906  
(765) 583-4565  
(765) 426-3398  
rsheets462@aol.com  
showsteers.com/sheets



Lots 39-44

2518 N SR 25  
Waynestown, IN 47990  
(765) 234-8506  
(765) 366-4894  
info@sennettcattle.com



### **Wesner Livestock** **Enterprises**

Lots 45-54

**Barry Wesner**  
1821 West 700 South  
Chalmers, IN 47929  
(219) 984-5587  
cell (219) 863-4744  
wle@home.ffni.com

# Horstman Cattle Company

FOREVER LADY FAMILY | Lot 1

## LAH forever Lady 204Z



EPDs	
BW	I+1.9
WW	I+60
YW	I+108
MK	I+23



MAPLE LANE FOREVER LADY 277 – Dam of Lot 1

Cow	Angus	DOB: 01/11/2012
AAA #: 17248101	Tattoo: 204Z	Polled

HARB ONWARD 786 J H

*Sire* VAR ROCKY 80029

VERMILION LASS 0029

SS TRAVELER 6807 T510

*Dam* MAPLE LANE FOREVER LADY 277

SVF FOREVER LADY 1120

- Owned by Horstman Cattle Co., W. Lafayette, IN.
- This special sale attraction is an elite January show heifer prospect by VAR Rocky 80029 back to the ever popular Maple Lane Forever Lady 277, who is a distinguished donor dam by the proven calving ease, high marbling SS Traveler 6807 T510 back to the ever popular \$2.5 million plus producing SVF Forever Lady 1120.
- Dam of this female was selected by LaGrand Ranch as the top-selling female of the Maple Lane Angus Complete Dispersal Sale, and is an elite donor in the LaGrand program that went on to produce the \$28,000 Supreme Champion at the 2007 Black Hills Stock Show, LaGrand MAF Antidote 5775.
- A full sister to the dam of this female was the \$23,000 top-selling pregnancy of a past Eaglestone Farm sale and maternal sibs include an array of impressive top-selling individuals across the country.
- The third-generation Pathfinder dam, Forever Lady 163 GDAR, has generated more than \$500,000 in lifetime progeny sales.
- This elite show heifer prospect not only reads with a phenomenal set of numbers but has what it takes to compete at all levels and is one of the very best heifers ever produced in the Horstman Cattle Company program.
- This outstanding female has a great disposition and has the attitude to make a great show heifer and a fun project for any junior member.



LAGRAN MAF ANTIDOTE 5775 –  
The \$28,000 featured maternal brother to Lot 1.



SVF FOREVER LADY 1120 – The \$2.5 million producing  
grandam of Lot 1.

# Horstman Cattle Company

EMPRESS FAMILY | Lot 2-2A

## HEIFER CALF PREGNANCY



**LAH Famous Empress 415 - Dam of Lot 2**

<i>Sire</i>	<b>B C LOOKOUT 7024</b>	<b>O C C LEGEND 616L</b>
		<b>GIBBET HILL MIGNONNE E37</b>
<i>Dam</i>	<b>LA H FAMOUS EMPRESS 415</b>	<b>FAMOUS 7001</b>
		<b>LA H EMPRESS 116</b>

- Owned by Horstman Cattle Co., W. Lafayette, IN.
- This featured February show heifer prospect by Moore Beef goes back to the ever popular \$28,000 Supreme Champion Bull of the 2007 Black Hills Stock Show, LaGrand MAF Antidote 5775, who is a maternal brother to the featured Lot 1 female in this year's sale back to the \$75,000 featured Northern Improvement 4480 GF and the featured Empress Family.
- LAH Empress 026 stems from the same cow family that produced LAH Empress 415, LAH Empress 516, and the \$18,000 LAH Empress 151Y — top selling heifer calf of 2011 Factory Direct Sale.
- This outstanding show heifer prospect is long necked, deep bodied and one of the exciting show heifer prospects in this year's sale.
- She has an excellent disposition and is a pleasure to work with; any young junior member can be at ease exhibiting this female.



**LAH EMPRESS 228Z - She sells as Lot 2A**

- Owned by Horstman Cattle Co., W. Lafayette, IN.
- This special sale attraction is a confirmed heifer pregnancy by the featured BC Lookout 7024 back to LAH Famous Empress 415, a foundation donor female in the Horstman Cattle Company program. This elite pregnancy is a full sister to the \$18,000 top-selling heifer calf of the Inaugural Factory Direct Sale going to the Jacob's Family of Sulphur, Oklahoma.



**LAH EMPRESS 151Y - The \$18,000 full sister to Lot 2.**

- The donor dam of this exceptional heifer calf pregnancy is a full sister to one of the all time winningest show heifers in the state of Indiana. This female was exhibited by Garrett Knebel and bred in the Horstman Cattle Co. program. From 2005 to 2006 she enjoyed a great show career and was selected as the Spring Heifer Calf Champion at the 2005 NAILE ROV Angus Show, the 2005 Champion Angus Heifer of the Hoosier Beef Congress, 2005 Ohio AGR Champion Angus Heifer, 2006 IN State Preview Jr Show Grand Champion Female, 2006 Res. Grand Champion Female IN State Preview Open Show, 2006 Grand Champion Female Eastern Regional Jr. Show, Res Junior Div. 1 Female NJAS, and Grand Champion Angus Female at the 2006 IN State Fair. This female went on to produce the 2012 Grand Champion Female at the KY State Fair Open and Jr. Shows.
- This elite heifer pregnancy will be a maternal sister to the fourth overall

- percentage Champion Female of the 2011 Simmental Jr. National, the Res Grand Champion Female of the MO AGR Jr. Show, and the fourth overall Champion at the Badger Kickoff as well as a class winner at the NAILE.
- This special sale attraction stems from a granddam that records WR 3@106, and a dam that has a progeny production record of BR1@99, WR 1@101. Complimented by the fact that she goes back to the breed legend DF Empress 6079, who has produced numbers sale toppers and features for Oklahoma State University including the ABS Global AI Sire OSU Currency.
- She sells with a Commercial Recip #962, daughter of a Stockman 365 son.

## LAH Empress 228Z



<b>Cow</b>	<b>Angus</b>	<b>DOB: 02/15/2012</b>
<b>AAA #: 17241520</b>	<b>Tattoo: 228Z</b>	<b>Polled</b>

<i>Sire</i>	<b>MOORE BEEF</b>	<b>H S A F BANDO 1961</b>
		<b>MOORE 216-FOREFRONT 08</b>
<i>Dam</i>	<b>LAH LAH EMPRESS 026</b>	<b>LAGRAND MAF ANTIDOTE 5775</b>
		<b>LA H NORTHERN EMPRESS 412</b>



**LAH SCC EMPRESS 516 - The 2006 Reserve Grand Champion Female of the American Royal and full sister to the dam of Lot 2.**

ELBA FAMILY | Lot 3  
LADY FAMILY | Lot 4

LOT  
**3**

- Owned by Horstman Cattle Co., W. Lafayette, IN.
- A daughter of the \$48,000 P R Black Friday 0244 back to BCC Bushwacker 41-93 on the bottom side and the featured 4048 female bred in the Paul Robbins program in Oklahoma stems from the featured Elba family.
- This female has an outstanding look, is deep bodied and offers tremendous cow potential. She stems from a donor dam that has a progeny production record of BR 6@96, WR 6@104, YR 1@102, U%IMF 2@108, UREA 2@106 with two daughters in production with an average nursing ratio of 108.



EPDs	
BW	I+1.9
WW	I+46
YW	I+70
MK	I+21



PR BLACK FRIDAY 0244 – The \$96,000 valued sire of Lot 3.

Cow	Angus	DOB: 03/13/2012
AAA #: 17248396	Tattoo: 241Z	Polled

- Sire* **P R BLACK FRIDAY 0244** **DUFF NEW EDITION 6108**
- P R MONA LISA 529**
- B C C BUSHWACKER 41-93**
- Dam* **ROBBINS MISS ELBA 4048** **JO MISS ELBA 161**

Cow	Angus	DOB: 04/15/2011
AAA #: 16958154	Tattoo: 158Y	Polled

- Sire* **LAGRAND MAF ANTIDOTE 5775** **G 13 STRUCTURE**
- MAPLE LANE FOREVER LADY 277**
- BC 7022 RAVEN 7965**
- Dam* **LAH LADY 805** **CHAMPION HILL LADY 2182**

LOT  
**4**

- Owned by Horstman Cattle Co., W. Lafayette, IN.
- This direct daughter of the \$28,000 Supreme Champion at the 2007 Black Hills Stock Show, LaGrand MAF Antidote 5775, stems back to the ever popular Champion Hill Lady 2182, who is a full sister to the only two-time ROV Show Heifer of the Year, Champion Hill Lady 2185, who sold for one-half interest for \$45,000 and was the third top-selling female of the 2001 Champion Hill Sale.
- Maternal sister to the dam of this female, Champion Hill Lady 4618, was the Reserve Grand Champion Owned Female at the National Jr Angus Show in 2006 by Callie Q Smith of Lebanon, TN.
- Bred to calve March 6, 2013 to BC LOOKOUT 7024. Confirmed Heifer Pregnancy.



EPDs		
	Sire	Dam
BW	+5.0	I+4.1
WW	+44	I+42
YW	+81	I+77
MK	+28	I+10



CHAMPION HILL LADY 2182 – The grandam of Lot 4.

# Horstman Cattle Company

**SHAW**



LAH SUE 604S – Son of Lot 5.



EPDs	
BW	1.4
WW	50.1
YW	62.9
MK	19.5
API	95.8
TI	53.6

Cow	3/4 SM 1/4 AN	DOB: 02/14/2004
ASA #:	2239627	Tattoo: 145P
		Polled

	<i>Sire</i>	SS GOLDMINE L42	WLE POWER STROKE
			GW MISS LUCKY BUCK 858G
	<i>Dam</i>	SHAWNEE MISS 145L	WLE BANDWAGON
			45E_

- Owned by Horstman Cattle Co., W. Lafayette, IN.
- Without question one of the all time great females to ever be offered at Horstman Cattle Company. This featured donor dam and dam of LAH Sue 604S is one of the elite females ever offered. LAH Sue 604S was selected as the Grand Champion at the 2006 Indiana State Fair as a calf and he went on to sire the fourth overall percentage female at the 2011 National Jr Angus Show, Reserve Grand Champion at the Missouri AGR, fourth overall at the Badger Kickoff and numerous class winners at the North American International Livestock Exposition.
- She is by SS Goldmine L42 back to the featured Bandwagon on the bottom side. She is an elite 3/4 blood cow that is one of the all time top egg producers in the program. Horstman Cattle Company is offering this big-footed, stout, powerful female that has numerous daughters working in the program.

## LAH KEHARA 217Z

**LOT 5A**



EPDs	
BW	1.4
WW	55.7
YW	75.6
MK	20.1
API	105
TI	58

Cow	PB Simmental	DOB: 02/02/2012
ASA #:	2638107	Tattoo: 217Z
		Polled

<i>Sire</i>	SVF/NJC BUILT RIGHT N48	CNS DREAM ON L186
		NJC EBONY ANTOINETTE
<i>Dam</i>	SHAWNEE MISS 145P	SS GOLDMINE L42
		SHAWNEE MISS 145L

- Owned by Horstman Cattle Co., W. Lafayette, IN.
- This featured February show heifer prospect is an elite purebred female. If you are not afraid of a little color this one will be for you.
- She has tremendous power and is going to make somebody a very productive, powerful and attractive cow after she hangs up the halter.
- She is a direct daughter of SVF/NJC Built Right N48 back to the featured Shawnee Miss 145P, who is a famous donor dam to LAH Sue 604S who went on to sire the fourth overall percentage female in the 2011 Simmental Jr National, Reserve Grand Champion at the Missouri AGR Show, the fourth overall at the Badger Kickoff and numerous class winners at the North American International Livestock Exposition.

# SHAWNEE MISS 145P



## LAH SHAWNEE MISS 145P EMBRYOS

Selling 6 Frozen Embryos - Sired By 3C Macho  
Selling 12 Frozen Embryos - Sired by O C C Legend 616L

Cow	3/4 SM 1/4 AN	DOB: 04/01/2012
ASA #: 2638118	Tattoo: 245Z	Polled

*Sire* **TJSC OPTIMUS PRIME 12W**

**SVF STEEL FORCE S701**

**KS MISS SHES SO SWEET 9**

*Dam* **SHAWNEE MISS 145P**

**SS GOLDMINE L42**

**SHAWNEE MISS 145L**

- Owned by Horstman Cattle Co., W. Lafayette, IN.
- This maternal sister to the featured 2006 Grand Champion at the Indiana State Fair, LAH Sue 604S, who went on to sire the fourth overall percentage female in the 2011 Simmental Jr National, Reserve Grand Champion at the Missouri AGR Show, the fourth overall at the Badger Kickoff and numerous class winners at the North American International Livestock Exposition.
- She is a featured maternal sister by Optimus Prime 12W. This double-bred, three-quarter blood female is the result of the Trennepohl Farms purchase of "half a flush" on Shawnee Miss 145...only due to their confidence in our cow are we lucky enough to offer this special female.
- This female has tremendous power and show ring look. She is Simmental eligible in the state of Indiana and will run with the percentages anywhere and don't be afraid to trot her through a commercial heifer class with the right person sorting them.
- She has certainly been a favorite all summer, and remember, these 3/4 females can produce purebred offspring...take advantage here!

# LAH KEHARA 052X



LAH KEHARA 052X - She sells as Lot 6.

Cow	PB Simmental	DOB: 04/01/2010
ASA #: 2638072	Tattoo: 052X	Polled

*Sire* **CNS DREAM ON L186**

**NICHOLS LEGACY G151**

**CNS SHEEZA DREAM K107W**

*Dam* **SHAWNEE MISS 145P**

**SS GOLDMINE L42**

**SHAWNEE MISS 145L**

EPDs	
BW	1.0
WW	57.1
YW	74.3
MK	16.2
API	122
TI	63

- Owned by Horstman Cattle Co., W. Lafayette, IN.
- Her dam, Shawnee Miss 145P, is a featured donor selling in this year's sale and the dam of the featured 2006 Indiana State Fair Grand Champion as a calf, LAH Sue 604S, who went on to sire the fourth overall percentage female in the 2011 Simmental Jr National, Reserve Grand Champion at the Missouri AGR Show, the fourth overall at the Badger Kickoff and numerous class winners at the North American International Livestock Exposition.
- This is a young, powerful female with a tremendous future. She is extremely feminine fronted, beautifully uddered and backed by a great 3/4 blood Goldmine female. She has done a wonderful job with her first heifer raising her Grandmaster daughter and is bred back on her first attempt.
- Here is certainly a tremendous money maker.
- Bred to calve February 13, 2013 to NLC MR UPGRADE. Examined safe. Confirmed Heifer Pregnancy - This resulting heifer will possess a very high API.

# LAH KEHARA 232Z



Cow	PB Simmental	DOB: 02/19/2012
ASA #: 2638115	Tattoo: 232Z	Polled

*Sire* **SS EBONY'S GRANDMASTER**

**PVF-BF BF26 BLACK JOKER**

**SOSF EBONY'S JOY L-123**

*Dam* **LAH KEHARA 052X**

**CNS DREAM ON L186**

**SHAWNEE MISS 145P**

EPDs	
BW	1.4
WW	53.8
YW	74.5
MK	8.2
API	112
TI	60

- Owned by Horstman Cattle Co., W. Lafayette, IN.
- This direct daughter of Ebony's Grandmaster stems back to a full sister to LAH Sue 604S. Here is a beautiful blending of Dream On and Shawnee Miss 145P, who was selected as the 2006 Indiana State Fair Grand Champion as a calf and went on to sire numerous champions throughout the country.
- This featured purebred female has a tremendous future. She improves every single day and has a remarkable disposition. She stems back to one of the all-time great producers in the Horstman Cattle Company, Shawnee Miss 145P.

# LAH KEHARA 245Z



EPDs	
BW	1.4
WW	55.3
YW	72.3
MK	19.0
API	98.0
TI	59.0

# Horstman Cattle Company

**LAH MIGNONNE 243Z**

LOT

**7A**



EPDs	
BW	1.9
WW	69.7
YW	101.3
MK	19.0
API	114
TI	73

Cow	3/4 SM 1/4 AN	DOB: 03-14-2012
ASA #: 2639926	Tattoo: 243Z	Polled

<i>Sire</i> WAGR UPSIDE 020X	MR NLC UPGRADE U8676
	3C MELODY M668 BZ
<i>Dam</i> PRC LOOKING GOOD T94	3C MACHO M450 BZ
	B C MIGNONNES LIBBY 385

- Owned by Horstman Cattle Co., W. Lafayette, IN.
- Special Sale Attraction.
- The sire of this outstanding female, WAGR Upside, is a bull that has a closed semen syndicate to only 10 featured owners in the country. His semen has not been made available to the buying public, thus this is a unique opportunity to acquire one of the very first females in the country. There will only be a few select females for sale by this outstanding bull this fall--DON'T WAIT--GET ON BOARD NOW!
- This direct daughter of WAGR Upside is a big time 3/4 show heifer prospect and future donor. She is a direct daughter of the \$30,000 valued featured Lot 1 top-selling cow of the Inaugural Factory Direct Sale, PRC Looking Good T94, now working in the Horstman Cattle Co. and Lazy H programs.
- Dam was selected as the 2011 Grand Champion Cow of the Breeder's Sweepstake and went on to produce the Reserve Grand Champion Percentage Female at the 2011 Indiana State Fair open show exhibited by McKenna Mitchell. She also went on to produce two daughters that were class winners and second place class winners at the 2011 Indiana State Fair and a \$7,000 feature who was selected as the Reserve Division Champion at the 2011 Indiana State Fair, LAH Mignonne 121Y.
- Donor dam also went on to produce over \$30,000 in progeny sales through the Inaugural Factory Direct Annual Production Sale.



Mark Sneed

PRC LOOKING GOOD T94



WAGR Upside - Sire of Lot 7A

**LAH PRC  
LOOKING GOOD T94  
EMBRYOS**

LOT

**7C**

Selling 3 Frozen Embryos

<i>Sire</i> LAH SUE 604S	CNS DREAM ON L186
	SHAWNEE MISS 145P
<i>Dam</i> PRC LOOKING GOOD T94	3C MACHO M450 BZ
	B C MIGNONNES LIBBY 385

**LAH MIGNONNE 220Z** **LOT 7B**

Cow	3/4 SM 1/4 AN	DOB: 02/09/2012
ASA #: 2638110	Tattoo: 220Z	Polled

<i>Sire</i>	LAH SUE 604S	CNS DREAM ON L186
		SHAWNEE MISS 145P
<i>Dam</i>	PRC LOOKING GOOD T94	3C MACHO M450 BZ
		B C MIGNONNES LIBBY 385



EPDs	
BW	0.1
WW	57.4
YW	79.2
MK	20.8
API	122.0
TI	66



- Owned by Horstman Cattle Co., W. Lafayette, IN.
- This direct daughter of LAH Sue 604S stems back to the \$30,000 featured Horstman Cattle Company and Lazy H proven donor, PRC Looking Good T94, who produced over \$30,000 in progeny sales through the Inaugural Factory Direct Annual Production Sale and was selected as the 4011 Grand Champion Cow of the Breeder's Sweepstakes. She went on to produce Reserve Grand Champion Percentage Female at the 2011 Indiana State Fair.
- This elite show heifer prospect will make a tremendous breeding piece and outstanding show heifer prospect. She is backed by two of the most proven cow families in the Horstman Cattle Company, Shawnee Miss 145P and PRC Looking Good T94.
- A great opportunity to acquire a direct daughter of T94. Full sib embryos have been purchased by Circle M Cattle Co. of Texas and will be working in their featured herd.



REMINGTON LOCK N LOAD - Sire of Lot 7D.

**LAH PRC LOOKING GOOD T94 PREGNANCY**

**LOT 7D**

Due Date: 02-23-13

<i>Sire</i>	REMINGTON LOCK N LOAD 54U	REMINGTON ON TARGET 2S
		BAR15 MISS KNIGHT 78E-51G
<i>Dam</i>	PRC LOOKING GOOD T94	3C MACHO M450 BZ
		B C MIGNONNES LIBBY 385

- Owned by Horstman Cattle Co., W. Lafayette, IN & Lazy H Simmental, OH.
- This special sale attraction is an elite confirmed heifer calf pregnancy by the ever popular Remington Lock and Load 54U, who is an elite herd sire prospect stemming back to the \$30,000 valued PRC Looking Good T94, who was the featured Lot 1 top-selling cow in the Inaugural Factory Direct Sale and was selected as the 2011 Grand Champion Cow of the Breeder's Sweepstakes and went on to produce Reserve Grand Champion Female at the 2011 Indiana State Fair Open Show. She is also a maternal sister to the Select Sires A.I. Sire, BC Classic 385-7, and the granddam is a featured full sister to the Genex/CRI A.I. Sire, BC Lookout 7024.
- This elite heifer calf pregnancy offers unlimited genetic potential and tremendous earning power.
- NOTE: Sire of this female, Remington Lock N Load, is owned by Lazy H and semen is only available at public action. Couple this with the fact that this mating is also by a great dam, the possibilities are endless with this pregnancy.
- Selling with recip #902, commercial daughter of Ali.

# Horstman Cattle Company

LOT  
**8**

## LAH MISS SHOWGIRL 834U



EPDs	
BW	1.5
WW	61.6
YW	91.4
MK	23.5
API	117.1
TI	65.2

Cow	3/4 SM 1/4 AN	DOB: 12/12/2008
ASA #: 2529294	Tattoo: 834U	Polled

*Sire*

**LAH SUE 604S**

**CNS DREAM ON L186**

**SHAWNEE MISS 145P**

*Dam*

**HB MS SHOWGIRL S611**

**EXAR LUTTON 1831**

**WCS MS SHOWGIRL 219M**

- Owned by Horstman Cattle Co., W. Lafayette, IN & Gage Tebo, IN.
- This great cow is confirmed with a heifer calf pregnancy to WAGR Upside, a bull that has a closed semen syndicate to only 10 featured breeders in the country and this heifer calf will be granted Purebred papers when born. Here is one you won't want to miss, think of the opportunity here.
- This incredible female is a 3/4 blood daughter of LAH Sue 604S out of the featured \$10,200 second top-selling cow of the Inaugural Factory Direct Sale, HB Ms Showgirl S611, and now resides at Knapper Cattle Company.
- The Dam of this featured female is a full sister to the 3rd overall percentage female of the National Jr. Simmental Show for Megan Favorite.
- This female is a powerful, attractive, huge-footed, good-uddered female that carries the all important high API. She will produce great purebreds and you will have a hard time finding one as stout as this one.
- Bred to calve February 15, 2013 to WAGR UPSIDE. (Confirmed Heifer Pregnancy)



**HB MS SHOWGIRL S611 – The \$10,200 featured dam of Lot 8.**

# HB MS SHOWGIRL S608

LOT  
**9**



Cow	1/2 SM 1/2 AN	DOB: 09/02/2006
ASA #: 2354851	Tattoo: S608	

*Sire* BR MIDLAND  
TWINVALLEYPRECISION E161  
BR ROYAL LASS 7036-19

*Dam* WCS MS SHOWGIRL 219M  
PVF-BF BF26 BLACK JOKER  
GW MISS BRODERICK 337C

EPDs	
BW	2.0
WW	59.8
YW	97.0
MK	18.9
API	110.9
TI	65.2

- Owned by Horstman Cattle Co., W. Lafayette, IN.
- This great half blood female is a maternal sib to the second high-selling cow of the 2011 Factory Direct Sale, HB Ms Showgirl S611, who commanded \$10,200. S611 now works and resides at Knapper Cattle Co and was herself a full sister to Megan Favorite's 3rd overall percentage female at the National Jr. Simmental Show.
- S608 is offered as a sale highlight and is carrying the service of WLE Uno Mas, who is owned by Wesner Livestock Enterprises, Purdue University, and Select Sires.
- Bred to calve January 18, 2013 to WLE UNO MAS. (Grand Champion Bull of the 2012 Breeders Sweepstakes) Confirmed Heifer Pregnancy.

# LAH MS SHOWGIRL 105Y

LOT  
**9A**



Cow	3/4 SM 1/4 AN	DOB: 01/01/2011
ASA #: 2583722	Tattoo: 105Y	

*Sire* LAH SUE 604S  
CNS DREAM ON L186  
SHAWNEE MISS 145P

*Dam* HB MS SHOWGIRL S608  
BR MIDLAND  
WCS MS SHOWGIRL 219M

EPDs	
BW	1.3
WW	57.7
YW	84.5
MK	17.7
API	118.5
TI	64.5

- Owned by Horstman Cattle Co., W. Lafayette, IN.
- This powerful bred heifer is a direct daughter of 608S and LAH Sue 604S. This exciting, powerful cow will give you years of production with all kinds of breeding possibilities.
- Dam of this featured female is a maternal sister to the \$10,200 selection of Knapper Cattle Company through the Inaugural Factory Direct Sale. She is also a full sister to the third overall percentage female in a past National Jr Simmental Show for Megan Favorite.
- Bred to calve January 16, 2013 to MR NLC UPGRADE. Confirmed Heifer Pregnancy.

# Horstman Cattle Company

LOT  
**10**

## LAH HARLOT 226Z



EPDs	
BW	-0.2
WW	35.8
YW	54.5
MK	21.1
API	80
TI	52

### LAH HARLOT 226Z – She sells as Lot 10.

Cow	1/2 SM 1/2 AN	DOB: 02/13/2012
ASA #: 2638113	Tattoo: 226Z	Polled

<i>Sire</i>	SHAWNEE 50X	SS EBONYS GRANDMASTER
		SHAWNEE LADY 50R
<i>Dam</i>	LAH HARLOT 942N	MEYER RANCH 734
		(ANGUS)

- Owned by Horstman Cattle Co., W. Lafayette, IN.
- This great show prospect is a double bred half blood female out of a first calf heifer. She will make some noise in the percentage division anywhere she goes. She has already been successfully shown twice and her elite herd sire has been extremely successful for Horstman Cattle Co. as he is an elite calving-ease sire that many daughters are being retained to put back in the program. Here is one of the very best show heifer prospects in this year's sale from our program, we are excited about this one.
- Dam is a beautifully constructed Meyer daughter that will be flushed after calving in 2013 and came to us from the Rex Sheets and Sheets Cattle Farm.

LOT  
**11**

## LAH PRIMA DONNA 210Z



EPDs	
BW	0.3
WW	52.7
YW	65.7
MK	23.8
API	113
TI	56

Cow	PB Simmental	DOB: 02/02/2012
ASA #: 2638102	Tattoo: 210Z	Polled

<i>Sire</i>	SS GOLDMINE L42	WLE POWER STROKE
		GW MISS LUCKY BUCK 858G
<i>Dam</i>	HF PRIMAS TRADEMARK	GWS EBONYS TRADEMARK 6N
		FELT PRIMADONNA 575R

- Owned by Horstman Cattle Co., W. Lafayette, IN.
- This direct daughter of Goldmine L42 stems back to the featured Trademark daughter on the bottom side. This purebred project has a bright future and is out of a first calf heifer. Her dam was the choice of bred heifers from the 2011 Field of Dreams Sale and originated at Hobbs Farms and as many of you know went on to breed the 2012 Indiana State Fair Grand Champion and Grand Champion Female at the 2012 Simmental National Classic.
- Grandam of this female was selected as the 2006 Grand Champion Simmental Female at the Indiana State Fair Open Show.

### LAH PRIMA DONNA 210Z – She sells as Lot 11.

LOT  
**13B**

**LAH MIS VENUS 126Y**



EPDs	
BW	1.6
WW	44.7
YW	55.2
MK	6.7
API	91.1
TI	49.1

Cow	1/2 SM 1/4 AN 1/4 CA	DOB: 02/03/2011
ASA #: 9767449	Tattoo: 126Y	

<i>Sire</i> <b>LAH SUE 604S</b>	<b>CNS DREAM ON L186</b>
	<b>SHAWNEE MISS 145P</b>
	<b>LFC NUF SAID</b>
<i>Dam</i> <b>WDF MISS VENUS 7J CAX</b>	<b>BC MS TOTAL PWR 83Y</b>

- Owned by Horstman Cattle Co., W. Lafayette, IN.
- This is an exciting, young, attractive female that is going to make a great half-blood donor. She is backed by a great cow family. She is by the featured WDF Miss Venus 7J, a featured cow in the Sheets ChiAngus program that went on to produce the Reserve National Champion ChiAngus female at the North American International Livestock Exposition.
- Bred to calve February 13, 2013 to MR NLC UPGRADE U8676. Confirmed Heifer Pregnancy.

LOT  
**12**

**LAH DREAMER 221Z**



EPDs	
BW	1.6
WW	60.5
YW	80
MK	18.9
API	127
TI	65

Cow	PB Simmental	DOB: 02/09/2012
ASA #: 2638109	Tattoo: 221Z	Polled

<i>Sire</i> <b>TNT EVER READY R232</b>	<b>HC HUMMER 12M</b>
	<b>RC MISS LEGACY 058N</b>
	<b>CNS DREAM ON L186</b>
<i>Dam</i> <b>CLRWTR DREAMER X66T</b>	<b>CLRWTR PASSION U66M</b>

- Owned by Horstman Cattle Co., W. Lafayette, IN.
- This purebred Simmy heifer by TNT Ever Ready stems back to a Dream On daughter and is one of the very excited purebred heifers in our sale offering. The dam of this female was the selection of the 2011 Land of Lincoln Sale and was purchased from Clear Water Simmentals.
- She has tremendous capacity, good lines and a tremendous look while carrying a 127 API.

Cow	1/2 SM 1/4 AN 1/4 CA	DOB: 02/13/2012
ASA #: 2644043	Tattoo: 225Z	Polled

<i>Sire</i> <b>LAH SUE 604S</b>	<b>CNS DREAM ON L186</b>
	<b>SHAWNEE MISS 145P</b>
	<b>LFC NUF SAID</b>
<i>Dam</i> <b>WDF MISS VENUS 7J CAX</b>	<b>BC MS TOTAL PWR 83Y</b>

- Owned by Horstman Cattle Co., W. Lafayette, IN.
- This direct daughter of LAH Sue 604S is a powerhouse female brought to us as a result of the confidence Dr. Sheets had in LAH Sue 604S when he was gracious enough to split a flush on his great donor 7J. As many of you know, she is the dam of the Reserve Grand Champion ChiAngus female at the North American International Livestock Exposition.
- This heifer is a massive, powerful half blood that can work in many programs.

**LAH SYDNEY ANNA 303N EMBRYOS**

Selling 2 Sets of 5 Frozen Embryos

<i>Sire</i> <b>LAH SUE 604S</b>	<b>CNS DREAM ON L186</b>
	<b>SHAWNEE MISS 145P</b>
	<b>MEYER RANCH 734</b>
<i>Dam</i> <b>LAH SYDNEY ANNA 303N</b>	<b>8084</b>



LAH SYDNEY ANNA 303N – Donor dam of Lot 16.

LOT  
**13**

**LAH VENUS 225Z**



EPDs	
BW	1.6
WW	44.8
YW	55.3
MK	17.0
API	92
TI	48

# Horstman Cattle Company

LOT  
**14**

**LAH MANDY 146Y**



EPDs	
BW	0.9
WW	46.4
YW	57.2
MK	15.3
API	96.3
TI	52.4

Cow	1/2 SM 1/4 MA 1/8 MX 1/8 CA	DOB: 03/17/2011
ASA #: 2583729	Tattoo: 146Y	

<i>Sire</i>	LAH SUE 604S	CNS DREAM ON L186
		SHAWNEE MISS 145P
<i>Dam</i>	LAH MANDY 314N	BLSC PALE FACE 424L
		704G

- Owned by Horstman Cattle Co., W. Lafayette, IN.
- This direct daughter of LAH Sue 604S stems back to the featured Pale Face. She is a cool package, powerhouse female. She is extended, attractive, half-blood female and offers unlimited genetic potential.
- Club calf producers, gather around this one!
- She has always been a favorite in the Horstman program and we had her marked to be a featured bred heifer in the 2012 Factory Direct Sale the whole time we were laying out the lineup of the 2011 sale.
- Bred to calve February 14, 2013 to MR NLC UPGRADE U8676. Confirmed Heifer Pregnancy.

LOT  
**15**

# Hot Nurse 231Z



- LIFELINE**
- MAINE**
- HEAT WAVE**
- OCC DOCTOR**

*Sire* **HAIRY BEAR**

*Dam* **LAH HOT NURSE 623S**

- Owned by Horstman Cattle Co., W. Lafayette, IN.
- Hairy, fancy and no mistake. This elite show heifer prospect is a direct daughter of Hairy Bear back to a featured Heatwave daughter.
- She is out of a OCC Doctor female that originated in the Sheets ChiAngus program and is an exciting heifer. Her full brother was overlooked all last summer and later was named Grand Sale Steer of the 2011 Hoosier Beef Congress.
- Don't let this one slip through the cracks. She will be an outstanding Jr project. A full brother was the Grand Champion Sale Steer of the 2011 Hoosier Beef Congress.



**HAIRY BEAR – Sire of Lot 15.**

## IT'S SHOWTIME!

You can't miss with Uno Mas



*Dream's Dream*  
**7SM65 # 2532016**

**Dream On x Goldmine**

Along with having over 100 really nice calves on the ground at Purdue, Uno Mas has matured into a faultless Simmental bull who looks great from any angle. He didn't grow up in a show barn—and after living 12 months at stud, Uno captured Grand Champion Bull honors at the 2012 Sweepstakes and was a crowd favorite in his only time shown. Unbelievable in terms of soundness, body depth, disposition and just plain 'class' from end to end. Uno stems from a dam that doesn't miss—and you can't miss with Uno Mas—he's that good!



**Purdue Beef Unit**  
Brian DeFreese  
765-491-7421

**Wesner Livestock Enterprises**  
Barry Wesner  
219-863-4744

**NorthStar Cooperative**  
Greg Beavers  
812-345-2299

**Select Sires**  
614-873-4683  
[www.selectsiresbeef.com](http://www.selectsiresbeef.com)

# Locust Hill Farm

Lots 17A-22

## LHF forever Lady 205

**LOT 17A**



EPDs		
	Sire	Dam
BW	+1.6	+4.2
WW	+69	+51
YW	+115	+91
MK	+20	+26

Cow	Angus	DOB: 01/15/2012
AAA #: 17283787	Tattoo: 205	Polled

## LHF FOREVER LADY 210

**LOT 18A**



EPDs	
BW	I+3.2
WW	I+54
YW	I+99
MK	I+21

Cow	Angus	DOB: 01/19/2012
AAA #: 17283788	Tattoo: 210	Polled

<i>Sire</i>	TC GRIDIRON 258
<i>Sire</i>	S A V IRON MOUNTAIN 8066
<i>Sire</i>	S A V MADAME PRIDE 3249
<i>Sire</i>	BON VIEW NEW DESIGN 878
<i>Dam</i>	LHF FOREVERLADY 608
<i>Dam</i>	MAPLE LANE FOREVER LADY 2044

- Owned by Locust Hill Farm, Kirklín, IN.
- SELLING CHOICE OF LOTS 18A OR 18B.**
- This direct daughter of SAV Iron Mountain 8066 stems back to the breed leader for registrations, Bon View New Design 878, back to the \$80,000 Maple Lane Forever Lady 780.
- This female's maternal great-grandam is a full sister to the \$100,000 TRA Simply Forever 549, who is a second generation Reserve All American Grand Champion Cow walking in her mother's footsteps, SVF Forever Lady 1120, who was selected as the Grand Champion All American Cow at the All American Breeder's Futurity

## LHF forever Lady 206

**LOT 17B**

Cow	Angus	DOB: 01/18/2012
AAA #: 17283787	Tattoo: 206	Polled

<i>Sire</i>	CONNEALY CONSENSUS
<i>Sire</i>	CONNEALY CONSENSUS 7229
<i>Sire</i>	BLUE LILLY OF CONANGA 16
<i>Sire</i>	N BAR EMULATION EXT
<i>Dam</i>	MAPLE LANE FOREVER LADY 2044
<i>Dam</i>	MAPLE LANE FOREVER LADY 780

- Owned by Locust Hill Farm, Kirklín, IN.
- SELLING CHOICE OF LOTS 17A OR 17B.**
- These featured full sisters of Connealy Consensus 7229 stem back to the ever popular N Bar Emulation EXT and the \$80,000 Maple Lane Forever Lady 780 back to the \$2.5 million producing SVF Forever Lady 1120.
- These females stem from a dam that records WR 7@104, YR 4@101, U%IMF 4@101, UREA 4@102.
- Grandam of these females is a full sister to the \$100,000 TRA Simply Forever 549, who is a second generation All American Reserve Grand Champion Cow stemming from a great 1120 family.
- Dam of these females is a full sister in blood to the \$26,000 top-selling female of the 2002 Maple Lane Sale going to Ray Farms of Illinois and went on to be named the 2002 All American International Reserve Senior Heifer Calf Champion. Another full sister was selected as the \$10,000 heifer calf by Clifton Farms of Virginia.
- These elite EPD profile heifers offer unlimited genetic potential and stem from an extremely productive family.

## LHF Bemindful Maid 218

**LOT 18B**



Cow	Angus	DOB: 02/18/2012
AAA #: 17283789	Tattoo: 218	Polled

<i>Sire</i>	CONNEALY PRODUCT 568
<i>Sire</i>	CONNEALY FINAL PRODUCT
<i>Sire</i>	EBONISTA OF CONANGA 471
<i>Sire</i>	TWIN VALLEY PRECISION E161
<i>Dam</i>	LHF BEMINDFUL MAID 010
<i>Dam</i>	WAR EXT 4053 22 2107

- Owned by Locust Hill Farm, Kirklín, IN.
- SELLING CHOICE OF LOTS 18A OR 18B.**
- This direct daughter of Connealy Final Product stems back to N Bar Emulation EXT on the bottom side and the featured Bemindful Maid family that went on to produce the legendary DHD Traveler 6807.
- Grandam of this female is also the grandam of the featured Accelerated Genetics A.I. Sire, War Alliance 9126 6006.



EPDs	
BW	I+3.0
WW	I+60
YW	I+104
MK	I+23

EPDs		
	Sire	Dam
BW	-.2	I+3.4
WW	+65	I+41
YW	+116	I+80
MK	+27	I+24

LOT  
**20A**

**LHF Primrose 221**



EPDs	
BW	I+3.6
WW	I+47
YW	I+87
MK	I+15

Cow	Angus	DOB: 03/13/2012
AAA #: 17283792	Tattoo: 221	Polled

<i>Sire</i>	TC GRIDIRON 258
<i>Sire</i>	S A V IRON MOUNTAIN 8066
<i>Sire</i>	S A V MADAME PRIDE 3249
<i>Sire</i>	RITO PLUS
<i>Dam</i>	LHF PRIMROSE 413 OF RITO
<i>Dam</i>	T R A PRIMROSE 755

- Owned by Locust Hill Farm, Kirklín, IN.
- This direct daughter of the \$75,000 Accelerated Genetics A.I. Sire, SAV Iron Mountain 8066, stems back to the featured Thomas Primrose family on the bottom side.
- She stems from a dam that records BR 3@99 and reads with tremendous carcass and maternal genetics.

LOT  
**19A**

**LHF Skymere 220**



EPDs	
BW	I+2.3
WW	I+45
YW	I+80
MK	I+20

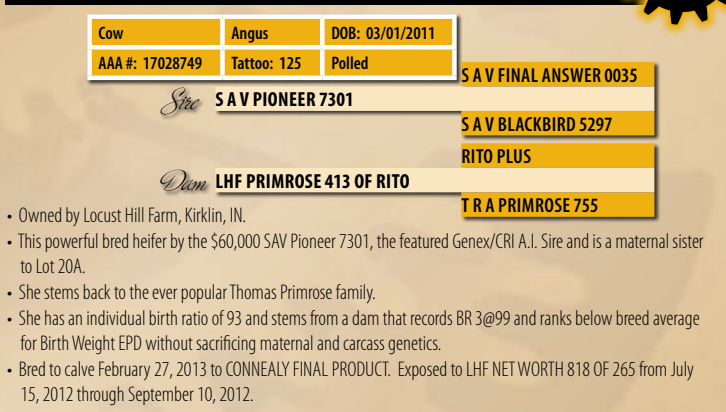
Cow	Angus	DOB: 03/07/2012
AAA #: 17283791	Tattoo: 220	Polled

<i>Sire</i>	O C C LEGEND 616L
<i>Sire</i>	B C LOOKOUT 7024
<i>Sire</i>	GIBBET HILL MIGNONNE E37
<i>Sire</i>	N BAR EMULATION EXT
<i>Dam</i>	T R A KATIES EXT 659
<i>Dam</i>	KATIES SKYMERE 454

- Owned by Locust Hill Farm, Kirklín, IN.
- **SELLING CHOICE OF LOTS 19A OR 19B.**
- These featured full sisters by the ROV Sire of the Year, BC Lookout 7024 stem back to the featured Mengs Skymere family on the bottom side.
- They stem from a dam that records WR 9@107, YR 3@108, U%IMF 3@104, UREA 3@104

LOT  
**20B**

**LHF Primrose 125**



Cow	Angus	DOB: 03/01/2011
AAA #: 17028749	Tattoo: 125	Polled

<i>Sire</i>	S A V FINAL ANSWER 0035
<i>Sire</i>	S A V PIONEER 7301
<i>Sire</i>	S A V BLACKBIRD 5297
<i>Sire</i>	RITO PLUS
<i>Dam</i>	LHF PRIMROSE 413 OF RITO
<i>Dam</i>	T R A PRIMROSE 755

- Owned by Locust Hill Farm, Kirklín, IN.
- This powerful bred heifer by the \$60,000 SAV Pioneer 7301, the featured Genex/CRI A.I. Sire and is a maternal sister to Lot 20A.
- She stems back to the ever popular Thomas Primrose family.
- She has an individual birth ratio of 93 and stems from a dam that records BR 3@99 and ranks below breed average for Birth Weight EPD without sacrificing maternal and carcass genetics.
- Bred to calve February 27, 2013 to CONNEALY FINAL PRODUCT. Exposed to LHF NET WORTH 818 OF 265 from July 15, 2012 through September 10, 2012.

LOT  
**19B**

**LHF Skymere 222**



EPDs	
BW	I+2.2
WW	I+45
YW	I+80
MK	I+20

Cow	Angus	DOB: 04/01/2012
AAA #: 17283794	Tattoo: 222	Polled

Bill Conley



EPDs	
BW	+1.8
WW	+43
YW	+85
MK	+25

# Locust Hill Farm

LOT  
**21A**

## LHF Royal Lass 107



EPDs	
BW	+2.6
WW	+44
YW	+83
MK	+24

Cow	Angus	DOB: 01/06/2011
AAA #: 16970943	Tattoo: 107	Polled

<i>Sire</i>	S A V 8180 TRAVELER 004	SITZ TRAVELER 8180
		BOYD FOREVER LADY 8003
		TWIN VALLEY PRECISION E161
<i>Dam</i>	BR ROYAL LASS 7036-443	S A F ROYAL LASS 7036

- Owned by Locust Hill Farm, Kirklín, IN.
- SELLING CHOICE OF LOTS 21A OR 21B.**
- These featured full sisters by SAV 8180 Traveler 004, the featured Genex/CRI A.I. Sire back to the featured full sister to the \$202,000 BR Midland, who is the all time high seller in Midland Bull Test history.
- This female has an individual birth ratio of 92 and stems from a dam that records U%IMF 1@108, UREA 1@103 with one daughter in production with an average nursing ratio of 108.
- Bred to calve January 23, 2013 to CONNEALY FINAL PRODUCT. Exposed to LHF NET WORTH 818 of 265 from July 15, 2012 through September 10, 2012.

LOT  
**21B**

## LHF Royal Lass 121



EPDs	
BW	+4.2
WW	+47
YW	+87
MK	+24

Cow	Angus	DOB: 02/16/2011
AAA #: 16970948	Tattoo: 121	Polled

<i>Sire</i>	S A V 8180 TRAVELER 004	SITZ TRAVELER 8180
		BOYD FOREVER LADY 8003
		TWIN VALLEY PRECISION E161
<i>Dam</i>	BR ROYAL LASS 7036-443	S A F ROYAL LASS 7036

- Owned by Locust Hill Farm, Kirklín, IN.
- SELLING CHOICE OF LOTS 21A OR 21B.**
- These featured full sisters by SAV 8180 Traveler 004, the featured Genex/CRI A.I. Sire back to the featured full sister to the \$202,000 BR Midland, who is the all time high seller in Midland Bull Test history.
- She stems from a dam that records U%IMF 1@108, UREA 1@103 with one daughter in production with an average nursing ratio of 108.
- Bred to calve February 12, 2013 to SAV BISMARCK 5682. Exposed to LHF NET WORTH 818 of 265 from July 15, 2012 through September 10, 2012.

LOT  
**22**

## LHF Bemindful Maid 118



EPDs	
BW	+6.0
WW	+58
YW	+101
MK	+34

Cow	Angus	DOB: 01/25/2011
AAA #: 16970946	Tattoo: 118	Polled

<i>Sire</i>	S A V PROVIDENCE 6922	S A V 004 PREDOMINANT 4438
		S A V MAY 7238
		SCHURRTOP MC 2500
<i>Dam</i>	LHF BEMINDFUL MAID 734	LHF BEMINDFUL MAID 425 4053

- Owned by Locust Hill Farm, Kirklín, IN.
- This special sale attraction is a direct daughter of the featured SAV Providence 6922 back to the Bemindful Maid family, the same family that went on to produce DHD Traveler 6807.
- The grandam of this female is a full sister to the dam of the Accelerated Genetics A.I. Sire, War Alliance 9126 6006.
- She has an individual weaning ratio of 112 and stems from a dam that records WR 3@110, U%IMF 1@106, UREA 1@105.
- Bred to calve April 19, 2013 to SAV BISMARCK 5682. Exposed to LHF NET WORTH 818 OF 265 from July 15, 2012 through September 10, 2012.

## MP Isla 231

LOT  
**23**

Cow	Angus	DOB: 03/28/2012
AAA #: 17285517	Tattoo: 231	Polled

*Sire* **BC 7022 RAVEN 7965** **B C MARATHON 7022**  
**O C C BLACKBIRD 796F**

*Dam* **J A F WF MP ISLA 068** **BR MIDLAND**  
**WF MP ISLA 393**



- Owned by Mary Patton, Earl Park, IN.
- This direct daughter of BC 7022 Raven 7965 stems back to the \$202,000 BR Midland daughter and a daughter of WF MP Isla 393, who sold for \$9,750 for one-half interest as the top-selling female of the 2000 Woodlawn Sale and her first two natural calves being the 2000 Illinois Jr Preview Show Grand Champion and 2000 National Jr Angus Show First Prize Winner. She, herself, was the Reserve Grand Champion Female at the 2003 World Beef Expo ROV Show and a flush brother was the 2003 World Beef Expo Jr Bull Calf Champion.

## L&M Patton Isla 0

LOT  
**23B**

Cow	Angus	DOB: 03/12/2011
AAA #: 17064235	Tattoo: 0	Polled

*Sire* **LIMESTONE DARKHORSE U322** **BC 7022 RAVEN 7965**  
**PAF TRIDGE 5768**

*Dam* **J A F WF MP ISLA 612** **BR MIDLAND**  
**WF MP ISLA 393**



- Owned by Mary Patton, Earl Park, IN.
- This direct daughter of Limestone Darkhorse U322 stems back to the \$202,000 BR Midland and the featured WF MP Isla 393, a featured Isla donor in the Mary Patton program.
- A maternal brother to the grandam was the \$5,000 top-selling bull of the 2001 Woodlawn Annual Production Sale to Chalky Butte Angus of North Dakota and two other maternal brothers sold for \$3,500 to Timberline Angus of Illinois and \$2,000 to Andy Moore of Wyoming. The grandam was also a top-selling female of a past Woodlawn Annual Production Sale and her first two natural calves went on to be named the 2000 Illinois Jr Preview Show Grand Champion and the 2000 National Jr Angus Show First Prize Winner.
- Bred to calve March 16, 2013 to WTR 711 COMPLETE 015. Examined safe.

# Mary Patton Farms

**LOT**  
**24**

## MP Blue Ribbon 2806



Cow	Angus	DOB: 04/11/2012
AAA #: 17285507	Tattoo: 2806	Polled

<i>Sire</i>	SA F CONNECTION	SVF GDAR 216 LTD
		SA F ROYAL QUEEN 5084
<i>Dam</i>	MP BLUE RIBBON 806	PVF QUEST 511
		BLUE RIBBON 28 OF WOODLAWN

- Owned by Mary Patton, Earl Park, IN.
- This direct daughter of SAF Connection stems back to the featured TC Dividend 963 on the bottom side.
- This powerhouse pedigree offers unlimited genetic potential and is an elite April show heifer prospect that stems from a great family.

**LOT**  
**25**

## L&M Patton Pride 2105



Cow	Angus	DOB: 03/25/2012
AAA #: 17285516	Tattoo: 2105	Polled

<i>Sire</i>	PVF QUEST 511	C A FUTURE DIRECTION 5321
		HYLINE ELLEN 410
<i>Dam</i>	L&M PATTON PRIDE 5105	ONEILLS 587 STOCKMAN 282
		PATTONS FOCUS 105

- Owned by Mary Patton, Earl Park, IN.
- This direct daughter of PVF Quest 511 stems back to the featured Patton Focus 105 on the bottom side.
- She is an outstanding elite March heifer calf that offers unlimited show ring potential.

**LOT**  
**26**

## L&M Patton Blackbird 2220



Cow	Angus	DOB: 03/06/2012
AAA #: 17285514	Tattoo: 2220	Polled

<i>Sire</i>	SA F CONNECTION	SVF GDAR 216 LTD
		SA F ROYAL QUEEN 5084
<i>Dam</i>	L&M PATTON BLACKBIRD 9220	PVF QUEST 511
		PATTONS FOCUS 220

- Owned by Mary Patton, Earl Park, IN.
- This direct daughter of SAF Connection stems back to SAF Focus on the bottom side. She blends the Blackbirds, Ellens, Queens and Forever Ladies into a powerful genetic package.

# Sheets ChiAngus Lots 27-38

**LOT**  
**27**

## RSRS WOW GAL 2CM

Cow	13.3% Chi	DOB: 03/05/2012
ACA #: 362011	Tattoo: SZ	Polled

<i>Sire</i>	<b>WHO DA MAN</b>	<b>WHO MADE WHO</b>
		<b>CA X MA X SM 55</b>
<i>Dam</i>	<b>RSRS MS DAWSON</b>	<b>MBG PAYBACK</b>
		<b>RSRS DAWSON GABRIEL 1998</b>

- Owned by Sheets Chiangus, W. Lafayette, IN.
- Here's a daughter of the awesome "Who Da Man," one of the most sought after sires of the show calf industry. His semen is in such demand that two units brought \$2,100 per unit.
- RSRS Wow Gal 2CM's dam has produced not one but two ACA National Division Champion Bulls and has a fantastic daughter in the herd.
- Buy her to win and breed her to profit!
- THF/PHF (clean by pedigree).
- Entered in Louisville.



**LOT**  
**28**

## RSRS LADY KATE 1CA

Cow	12.9% Chi	DOB: 03/30/2012
ACA #: 362012	Tattoo: ZZ	Polled

<i>Sire</i>	<b>DAWSON'S CHEROKEE 166</b>	<b>DAWSONS UNIQUE 134</b>
		<b>DAWSON MS ELBA 21</b>
<i>Dam</i>	<b>VOL LADY DI 260K 2CA</b>	<b>EAGLE SCOUT 2CA</b>
		<b>BC TOTAL POWER 2CA</b>

- Owned by Sheets Chiangus, W. Lafayette, IN.
- "Cow Power," that is what you get when you look at RSRS Lady Kate 1CA. Her dam is the famous VOL Lady Di 260K 2CA donor of Schrick's in Texas.
- Tie into this breeding piece and enjoy.
- THF & PHF (clean by pedigree).
- Entered in Louisville.



**LOT**  
**29**

## RSRS VISION

Cow	16.7% Chi	DOB: 05/02/2012
ACA #: 362062	Tattoo: 8Z	Polled

<i>Sire</i>	<b>VERIZON (COMMERCIAL)</b>	
		<b>LFC NUF SAID 1CM</b>
<i>Dam</i>	<b>WDF MISS VENUS 7J CAX</b>	<b>BC MS TOTAL PWR 83Y PCA</b>

- Owned by Sheets Chiangus, W. Lafayette, IN.
- Interesting prospect here! She is fancy, stoud, hairy and sound.
- RSRS Vision's dam, WDF Venus 7J, is the donor that has done it all. 7J is the dam of the 2009 Supreme Female of the New Mexico State Fair, grandam of the 2005 ACA National Reserve Grand Champion ChiAngus Female, State Fair Grand Bulls at the Kentucky and Indiana State Fairs and 2012 Grand Steer of the White County 4H Show.
- Show her and enjoy her breeding power.
- THF/PHF.



# Sheets ChiAngus

LOT  
**30**

## RSRS DOUBLE "A" 2CA



Cow	21.7% Chi	DOB: 04/02/2012
ACA #: 362015	Tattoo: 87Z	Polled

<i>Sire</i>	PLAINVIEW LUTTON E102
<i>Sire</i>	HB ALTERNATIVE
	HB MS EILEEN 54P
	CJB FLASH PCA
<i>Dam</i>	RSRS ABSOLUTELY 87U
	WDF MISS VENUS 7J CAX

- Owned by Sheets Chiangus, W. Lafayette, IN.
- Hold the phone, boys, because when you dial RSRS Double "A" 2CA you will need to stop everything! Her sire is a past ACA National Grand Champion, HB Alternative, and her dam is a full sister to RSRS Aphrodite out of our Venus line.
- Serious about running at the ACA Chiangus Grand Female? Then buy her!
- THF/PHC.
- Entered in Louisville.

LOT  
**31**

## RSRS VIOLET



Cow	25.5% Chi	DOB: 03/28/12
ACA #: 362013	Tattoo: 4Z	Horned

<i>Sire</i>	DE BULL CAX
<i>Sire</i>	BHCS HEAT SEEKER 23
	BC TEX SHORTHORN 23
	LFC NUF SAID 1CM
<i>Dam</i>	WDF MISS VENUS 7J CAX
	BC MS TOTAL PWR 83Y PCA

- Owned by Sheets Chiangus, W. Lafayette, IN.
- RSRS Violet has some great cattle lined up in her pedigree. Her dam, WDF Venus 7J, has been our foundation donor from the get go. She has produced great show cattle that go on to produce great ones themselves.
- A full sister's first calf went to Hartman's in Nebraska and a full brother won the White County Steer Grand Banner.
- RSRS Violet's sire, Heat Seeker, is a legend of the industry and his daughters are some of the most sought after brood cows.
- This is a really stout female when viewed from behind. She is straight and true in her lines and as sound as you can make one.
- THF/PHC.
- Entered in Louisville.

LOT  
**32**

## RSRS MS RODMAN 1CA



Cow	7.5% Chi	DOB: 05/05/2012
ACA #: 362014	Tattoo: 6Z	Polled

<i>Sire</i>	WAR HALL OF FAME 1288 6197
<i>Sire</i>	JSAR MR RODMAN 39HKR
	J S A R MISS FERD 50 39YHK
	ARD RIDGE WILDCARD
<i>Dam</i>	CARMEL RANCH LADY 52X
	SPICELAND BEACH BABY 1CA

- Owned by Sheets Chiangus, W. Lafayette, IN.
- RSRS Ms Rodman is a younger ChiAngus heifer with a ton of potential. Heavier boned, heavier muscled and yet very extended and sound as she is set into motion.
- Dr. Sheets likes this one and she is out of a first calf heifer destined for the donor lot.
- THF/PHF (clean by pedigree).
- Entered in Louisville.

**LOT**  
**33**

**RSRS OLIVIA**

Cow	9.7% Chi	DOB: 02/27/2012
ACA #: 360727	Tattoo: 20Z	Polled

<i>Size</i>	<b>MONOPOLY</b>	<b>HEATWAVE</b>
		<b>WTF RUTH MEDINA</b>
<i>Dam</i>	<b>DAW PAYBACK 220M</b>	<b>MBG PAYBACK</b>
		<b>EXAR MISS EMULOUS 7680</b>

- Owned by Sheets Chiangus, W. Lafayette, IN.
- RSRS Olivia is a sweetheart and Dr. Sheets would not have named her after his first granddaughter if she wasn't special. She is the deepest, soundest and prettiest heifer ever raised in the Sheets program.
- Olivia's dam has produced two ACA National Champion Bulls and a daughter won Newton Co. Supreme Heifer also. This is a great cow family and of course sired by the incomparable Monopoly.
- THC/PHF.
- Entered in Louisville.



**LOT**  
**34**

**RSRS MS EIGHTY**

Cow	1/2 MA 1/2 RA	DOB: 04/03/2012
ACA #: 428248	Tattoo: 35Z	Polled

<i>Size</i>	<b>I-80</b>	<b>COWAN'S ALI 4M</b>
		<b>BPF MILEY 80T</b>
<i>Dam</i>	<b>PB ANGUS</b>	

- Owned by Sheets Chiangus, W. Lafayette, IN.
- RSRS Ms Eighty is a half Maine out of one of the hottest bulls around I-80. Soft made, hairy, showy and sound describes this gal. This will be a cornerstone for anyone looking for great % Maine females. She has a superb disposition as well.
- THF/PHF (clean by pedigree).



**LOT**  
**35**

**RSRS Alternative Track 2CA**

Cow	15.9% Chi	DOB: 04/2/2012
ACA #: 362016	Tattoo: 49Z	Polled

<i>Size</i>	<b>HB ALTERNATIVE</b>	<b>PLAINVIEW LUTTON E102</b>
		<b>HB MS EILEEN 54P</b>
<i>Dam</i>	<b>RSRS TRACK HER 2CA</b>	<b>WRL TRACKN NORMAN</b>
		<b>RSRS APHRODITE 1CA</b>

- Owned by Sheets Chiangus, W. Lafayette, IN.
- RSRS Alternative Track 2CA is the culmination of stacking two ACA National Champion Bulls on to the dam of the 2005 ACA Reserve Grand National ChiAngus Female, RSRS Flashy Venus 2CA.
- Here is your opportunity to get the top breeding pedigree of ChiAngus genetics in a very high quality package. Skip years of breeding and jump to the top of the ChiAngus food chain.
- THF/PHF.
- Entered in Louisville.



# Sheets ChiAngus



DAKT MARIE LEBOU – Donor dam of Lots 36 and 36A.

SELLING A FLUSH TO THE BULL OF THE BUYER'S CHOICE.  
Guaranteeing five transferable eggs.

## DAKT Marie LeBou



Selling Flush to the Bull of the Buyer's Choice

*Stee* **BULL OF THE BUYER'S CHOICE**

**BKMT DESIGN**  
**FCC MS MAINE 541E**

*Dam* **DAKT MARIE LEBOU**

- Owned by Sheets Chiangus, W. Lafayette, IN.
- SELLING A FLUSH TO THE BULL OF THE BUYER'S CHOICE. Guaranteeing five transferable eggs with no cap.
- Serious cattlemen, take note! This 3/4 Maine donor is a great producer. Her first calf by Ali (PB MA) was Supreme Female at the 2006 Hoosier Beef Congress and went on to capture Supreme Female in both rings at the 2007 Oklahoma Beef Congress and Champion Maine at the Indiana State Fair.
- Has also produced Division I Champion Chi Steer by Heat Wave at the 2010 Hoosier Beef Congress and another Heat Wave steer was Reserve Division Champion at the American Royal in 2011.
- TH & PH free.

## DAKT Marie LeBou Heifer Pregnancy



Heifer Pregnancy due 2/1/2013

*Stee* **ALI**

**BKMT DESIGN**  
**FCC MS MAINE 541E**

*Dam* **DAKT MARIE LEBOU**

- Owned by Sheets Chiangus, W. Lafayette, IN.
- This PB Maine heifer calf pregnancy is a full sister the 2006 Hoosier Beef Congress Supreme Female, 2007 Oklahoma Beef Congress Supreme Female Rings A & B and \$16,500 heifer from a pasture sale.
- Dam also produced Division I Champion Chi Steer at the Hoosier Beef Congress and Reserve Grand Steer at Columbus, IN. Another Heat Wave steer was the Reserve Division Champion in the 2011 American Royal.
- This heifer will rock!
- Sells with a good, calm commercial five-year-old recip, #207.
- THF/PHF (clean by pedigree).



MIMI –



OKLAHOMA BEEF SHOW

# Sheets ChiAngus BRED HEIFERS

## FOUR ROSES DELLA JEWEL 27Y

LOT

37

Cow	4.6% Chi	DOB: 05/07/2011
ACA #: 355974	Tattoo: 27Y	Polled

S A V MASTERPIECE 5289

*Sire* FOUR ROSES MPJR 208

M M DIAMOND DESIGN P04

FOUR ROSES DESTINATION 15T

*Dam* FOUR ROSES DELLA 42W

FOUR ROSES DELLA

- Owned by Sheets ChiAngus, W. Lafayette, IN.
- We bought this exciting ChiAngus from Four Roses as a replacement female after she won her class at the 2011 ACA National Show.
- Bred to calve April 7, 2013 to HIGG REMEDY (2CA). Note: "Remedy" is the hottest ChiAngus sire in the country. He recently sired the Supreme Female of the 2012 Tennessee Expo and Division Champion at the 2012 ACA AJHS in Lima, OH.
- THF/PHF (clean by pedigree).
- Calf will carry 16.775% Chi.



EPDs	
BW	0.0
WW	37.4
YW	65.1
MK	14.2

## RSRS DANGEROUS REDHEAD

LOT

38

Cow	Chianina	DOB: 05/13/2011
ACA #: 356200	Tattoo: 10Y	Polled

WILSON

*Sire* SUNSEEKER

CAMPBELLS HEATSEEKER SUZY

BHCS HEAT SEEKER 23

*Dam* RSRS ISABELLA XXX

RSRS ANGUS 10

- Owned by Sheets ChiAngus, W. Lafayette, IN.
- Here is a real good bred yearling that won in the show ring for Kinzey Goodman and is ready to produce a winner for you.
- Bred to calve April 15, 2013 to ROCKY BALBOA (CM).
- THF/PHF.
- Calf will carry 14.345% Chi.



EPDs	
BW	2.8
WW	33.1
YW	54.8
MK	10.7

# Sennett Cattle Company

Lots 39-44

LOT  
**39**

## SENNETT MISTY 1Z



EPDs	
BW	1.5
WW	45.2
YW	61.8
MK	17.5
API	84.0
TI	50.0

<b>Cow</b>	1/2 SM 3/8 MX 1/8 MA	DOB: 04/04/2012
ASA #: 2643525	Tattoo: 1Z	Polled

*Sire* **ONE AND ONLY**

*Dam* **WLE MISSY U409**

<b>HEAT WAVE</b>
<b>WADE 109</b>
<b>CNS DREAM ON L186</b>
<b>SHAWNEE MISS 770P</b>

- Owned by Sennett Cattle Company, Waynetown, IN.
- This is a beautiful marked half blood female out of the lead Simmental donor at Sennett Cattle. This heifer has the superior phenotype of her sire, One and Only, combined with the maternal stay ability, power, and rib of her Dam, WLE Missy U409.
- Here is an April Simmental Solution with a look that will get you to the head of the class.



WLE MISSY U409 – Donor dam of Lot 39.



ONE AND ONLY – Sire of Lot 39.

# SC ALL RIGHT ALL READY

LOT  
**40**



<b>Cow</b>	<b>Breed: Shorthorn Plus</b>	<b>DOB: 03/21/2012</b>
<b>ASA#: CM575387</b>	<b>Tattoo: 21Z</b>	<b>Polled</b>

<i>Sire</i>	<b>SULL RIGHT DIRECTION ET</b>	<b>CF TRUMP X</b>
		<b>NPS DESERT ROSE 004</b>
<i>Dam</i>	<b>GCC ALL RIGHT ALL READY</b>	<b>IRISH WHISKEY</b>
		<b>ANGUS 2/521</b>

- Owned by Sennett Cattle Company, Waynetown, IN.
- This direct daughter of SULL Right Direction is out of the 2008 Supreme Champion Female of the North American International Livestock Exposition and a half sister to SULL Hot Tamale and SULL Jaylynn, both Supreme Champion Females at the North American International.
- This outstanding, young prospect has a killer look and is backed by style and years of proven show ring performance.



GCC ALL RIGHT ALL READY – Donor dam of Lot 40.



SULL JAYLYNN – Maternal sister to Lot 40.



SULL HOT TAMALE – Maternal sister to Lot 40.

# Sennett Cattle Company

## SC ENCHANTED 3Z

LOT 41



EPDs	
BW	2.7
WW	33.9
YW	57.6
MK	14.1

Cow	Chianina	DOB: 03/05/2012
ACA #: 361755	Tattoo: 3Z	Polled

*Sire* **ASHW WHO DA MAN** WHO MADE WHO 411F 1CM  
ASHW CA X MA X SM 55

*Dam* **JSUL HS 274**

- Owned by Sennett Cattle Company, Waynetown, IN.
- This outstanding Who Da Man daughter is a 3/4 sister to the Reserve Supreme Champion at the 2010 Hoosier Beef Congress.
- Here is a sleek fronted, big hiped, monster boned, sound functional female, that offers unlimited genetic potential and tremendous show ring presence.



Sennett Agnes 106Y – She Sells as Lot 43.

LOT 43

## Sennett Agnes 106Y

Cow	Angus	DOB: 01/27/2011
AAA #: 17107604	Tattoo: 106Y	Polled

EPDs	
BW	I+2.0
WW	I+59
YW	I+103
MK	I+33

*Sire* **HARB PENDLETON 765 J H** S A V FINAL ANSWER 0035  
H A R B BLACK LADY 375 J H

*Dam* **PATTON LADY AGNES 928** S A V PROVIDENCE 6922  
PATTON LADY AGNES 338

- Owned by Sennett Cattle Company, Waynetown, IN.
- This direct daughter of HARB Pendleton 765 J H stems back to the legendary Patton Lady Agnes 913, who is the many time champion and past ROV Senior Yearling Show Heifer of the Year who went on to produce the 2008 Grand Champion Cow/Calf Pair at the 2008 Indiana State Preview Show as well as the 2008 Jr Heifer Calf Champion at the Indiana State Preview Show.
- Grandam of this female is a maternal sister to the \$14,000 valued Patton Lady Agnes 332, who is a maternal sister to the Roths CAF United 3181, who earned the ROV Show Bull of the Year award.
- Bred to calve January 4, 2013 to SVF/NJC MO BETTER M217 (with sexed heifer semen). Exposed to EXAR BADGER 0401B from March 31, 2012 through August 1, 2012.

## SENNETT BLACKCAP 108Y

LOT 42

Cow	Angus	DOB: 01/30/2011
AAA #: 17132996	Tattoo: 108Y	Polled

*Sire* **S A V PEACEMAKER 3179** BON VIEW NEW DESIGN 878  
S A V ELBA 1094

*Dam* **SENNETT BLACKCAP 803U** S A V NET WORTH 4200  
SENNETT BLACKCAP 351N

- Owned by Sennett Cattle Company, Waynetown, IN.
- This direct daughter of the \$180,000 ABS Global AI Sire, SAV Peacemaker 3179, stems back to the featured Sedgwicks Blackcap 2135. The third generation dam was bred in the McCurry Bros Ranch program in Kansas.
- She stems back, on the bottom side, to the \$117,500 Genex/CRI A.I. Sire, SAV Net Worth 4200, and the \$30,000 WCC Special Design L309.
- Bred to calve January 6, 2013 to SVF/NJC MO BETTER M217 (with sexed heifer semen). Exposed to EXAR BADGER 0401B from March 31, 2012 through August 1, 2012.

## SENNETT MISSY 117Y

LOT 44

Cow	1/2 SM 1/2 AN	DOB: 03/23/2011
ASA #: 2591879	Tattoo: 117Y	Polled

*Sire* **S A V BRILLANCE 8077** S A V BISMARCK 5682  
S A V BLACKCAP MAY 5270

*Dam* **WLE MISSY U409** CNS DREAM ON L186  
SHAWNEE MISS 770P

- Owned by Sennett Cattle Company, Waynetown, IN.
- Sennett Missy 117Y is from the heart of the bred heifer program and backed by an impressive \$67,500 SAV Brilliance 8077 back to WLE Missy U409, who is a full sister to the reigning Reserve National Champion Simmental sire, WLE Swagger, back to one of the most impressive Simmental females in existence, Shawnee Miss 770P.
- This female combines a negative birth weight with curve-bending API numbers of 139.2.
- She is carrying a sexed heifer calf by the high growth and calving ease sire, TJ Sharper Image 809U. This pregnancy will rank in the top 1% of the breed for terminal index, second percentile for Weaning Weight and third percentile for Yearling Weight.
- Bred to calve January 5, 2013 to TJ SHARPER IMAGE 809U (sexed heifer semen). Examined safe.



EPDs		
	Sire	Dam
BW	+3.2	I+3.7
WW	+57	I+42
YW	+97	I+77
MK	+32	I+10



EPDs	
BW	-0.9
WW	59.1
YW	88.6
MK	25.0
API	139.2
TI	69.3



WLE BLACKCAP Z0020 – She sells as Lot 45.

## WLE Blackcap Z0020



Cow	Angus	DOB: 01/05/2012
AAA #: 17237154	Tattoo: Z0020	Polled

<i>Sire</i>	S A V BRILLIANCE 8077	S A V BISMARCK 5682
		S A V BLACKCAP MAY 5270
		EXAR TOTALLY TUNED 71281
<i>Dean</i>	74-51 BLACKCAP 0020	EXAR BLACKCAP 4543

- Owned by Wesner Livestock Enterprises, Chalmers, IN.
- This direct daughter of SAV Brilliance 8077, the \$67,500 featured ABS Global AI Sire, stems back to the featured Blackcap family on the bottom side. She is a powerhouse female that stems back to a daughter of EXAR Totally Tuned 71281 and is bred for an outstanding show pedigree blending the Abigales, Mays and Arkdale Prides along with the Blackcaps into a powerful genetic package.
- I know we are known for Simmental cattle production but this Angus show heifer prospect is the real deal. It is a lot of fun to kick an Angus female into the Simmy pen and she gives up nothing in terms of bone and stoutness yet maintains an awesome look. This female has an excellent disposition and would be well suited for any age exhibitor. You be the judge and enjoy her.
- She has a tremendous look and offers to be one of the outstanding show prospects offered in this year's sale.



S A V BRILLIANCE 8077 – Sire of Lot 45.

## WLE Miss May Y30



Cow	Angus	DOB: 05/01/2011
AAA #: 17031889	Tattoo: Y30	Polled

<i>Sire</i>	S A V BRILLIANCE 8077	S A V BISMARCK 5682
		S A V BLACKCAP MAY 5270
		PLAINVIEW LUTTON E102
<i>Dean</i>	TYRA'S MAY BABY 30U	D F TYRA TWO

- Owned by Wesner Livestock Enterprises, Chalmers, IN.
- This direct daughter of the \$67,500 featured ABS Global AI Sire, SAV Brilliance 8077, stems back to Plainview Lutton E102 and a sire who ranks as calving ease without sacrificing maternal.
- This Brilliance daughter will spin your head with her look, balance, femininity and overall completeness. She is a show quality young lady with a great pedigree and carries the service of the Select Sires Purdue University herd sire, WLE Uno Mas, that was recently named Grand Champion Bull at the Simmental Breeders Sweepstakes.
- Imagine the possibilities in this SimAngus calf and enjoy her.
- Bred to calve February 13, 2013 to WLE UNO MAS X549. Examined safe.



WLE MISS MAY Y30 – She sells as Lot 46.

# Wesner Livestock Enterprises

## TCC ERICA T524

LOT

47



EPDs	
BW	1.4
WW	45.7
YW	81.5
MK	20.4
API	78.4
TI	51.6

Cow	Angus	DOB: 03/20/2007
ASA #: 2438337	Tattoo: T524	Polled
AAA #: 15740126		

*Sire* SAV 5175 BANDO 1024  
SA F 598 BANDO 5175  
CHAMPION HILL SLEEPYMISS

*Dam* VERMILLION ERICA 8906  
CONNEALY DATELINE  
VERMILLION ERICA 6173

- Owned by Wesner Livestock Enterprises, Chalmers, IN.
- The combination of SAV 5175 Bando 1024 stems back to the featured Erica family on the bottom side.
- TCC Erica represents a unique opportunity for the progressive breeder to make an investment. She came to us via the Genetic Perfection sale in Nebraska consigned by Brad Tucker. She was shown successfully by our daughter, Bailey, throughout Indiana. She has many maternal sibs: Angus and SimAngus that have claimed many winnings throughout the country.
- This female has never been flushed but needs to be as indicated by her natural progeny. Jason Kennedy owns a SimAngus herd bull and the Bertram family has a winning Angus heifer in Indiana. She is the prime of her life and positioned for maximum earnings in the future.
- This female stems from a dam that records WR 4@101, YR 2@107, UREA 1@106.
- She reads with tremendous growth without sacrificing maternal.
- Bred to calve March 14, 2013 to WLE UNO MAS X549. Examined safe.



WLE UNO MAS X549 – His influence sells.



WLE Crocus S105 - maternal sib to Lot 48

## ETR Ms Black Crocus L 105 Pregnancy

LOT

48

Pregnancy	1/2 SM 1/2 AN	Due 01-05-2013
ASA #: 2590548	Tattoo: Y231	Polled

*Sire* OCC LEGEND 6161  
O C C EMBLAZON 854E  
O C C BLACKBIRD 632J  
G&L BLACKFOOT 716D  
*Dam* ETR MS BLACK CROCUS L105  
TJF CROCUS J147

Due 01-05-2013

- Owned by Wesner Livestock Enterprises, Chalmers, IN.
- Here is a special opportunity to buy a pregnancy out of a high impact donor with a recip that has the pedigree and phenotype to have her own calf.
- The L105 cow has impacted many herds across the country with National Champion show winners and awesome production capabilities and is now deceased limiting the amount of progeny that will be left for sale.
- Selling with Recip #Y231. This recipient cow's pedigree is Legend X Goldmine X NJC SVF Love Me Don't You and speaks for itself.



ETR MS BLACK CROCUS L105 – Dam of Lot 48

## WLE SEVENTH HEAVEN Z136

LOT 49



EPDs	
BW	1.6
WW	81.2
YW	119.8
MK	16.2
API	120.0
TI	75.0

WLE SEVENTH HEAVEN Z136 – She sells as Lot 49.

Cow	PB SM	DOB: 01/05/2012
ASA #: 2629652	Tattoo: Z136	Polled

<i>Sire</i> CLO LTS ENTOURAGE 72T	CNS DREAM ON L186
	WAR DIVA M704
<i>Dam</i> WLE SEVENTH HEAVEN S136	GW LUCKY DICE 187H
	YC MISS NBD D26-4

- Owned by Wesner Livestock Enterprises, Chalmers, IN.
- Here is a purebred prospect that offers the total package. This long-fronted, stout-made female will command a lot of attention in the ring and her EPDs and storied lineage is sure to add value to her future production.
- She has an excellent disposition and is young exhibitor safe. Sisters to Z136 have been high sellers on numerous occasions in DIM sales and a special thanks and congratulations to the Frasa family on her 2011 sister.

## WLE SUMMER MORN Z617

LOT 50



EPDs	
BW	0.6
WW	53.9
YW	76.2
MK	16.6
API	126.0
TI	63.0

WLE SUMMER MORN Z617 – She sells as Lot 50.

## WLE ROXANNE Z409

LOT 51



EPDs	
BW	2.3
WW	53.9
YW	66.7
MK	16.5
API	110.0
TI	56.0

WLE ROXANNE Z409 – She sells as Lot 51.

Cow	3/4 SM 1/4 AN	DOB: 01/16/2012
ASA #: 2629637	Tattoo: Z409	Polled

<i>Sire</i> CNS DREAM ON L186	NICHOLS LEGACY G151
	CNS SHEEZA DREAM K107W
<i>Dam</i> GW MISS JET BLACK 409G	30Y

- Owned by Wesner Livestock Enterprises, Chalmers, IN.
- This red young lady will draw your attention with her overall power and dimension in an eye-appealing package. We have sold many sisters to this one over the years, to many states, with much success and we have a sister in production.
- Longevity is bred in here as we purchased her mom as a bred heifer from Gateway Simmentals in Montana and she just left us this year at 15 years of age.

## WLE LOLA VOSS

LOT 52A

Cow	Breed	DOB: 03/12/2011
ASA #: 2585107	Tattoo: 3/4 SM 1/4 AN	Polled

<i>Sire</i> GW LUCKY ACE 076TS	GW LUCKY ONE 686K
	GW MISS 1407 866P
<i>Dam</i> WLE LOLA S058	WLE POWER STROKE
	TRIPLE C LOLA M640

- Bred to calve February 18, 2013 to WLE SWAGGER, the reigning Reserve Grand Champion Bull at the 2012 National Western Stock Show.

## WLE LOLA Y0581

LOT 52B

Cow	3/4 SM 1/4 AN	DOB: 03/12/2011
ASA #: 2585113	Tattoo: Y0581	Polled

<i>Sire</i> GW LUCKY ACE 076TS	GW LUCKY ONE 686K
	GW MISS 1407 866P
<i>Dam</i> WLE LOLA S058	WLE POWER STROKE
	TRIPLE C LOLA M640

- Owned by Wesner Livestock Enterprises, Chalmers, IN.
- These full sisters are a pair of twin genetic gems for your appraisal sired by GW Lucky Ace and out of a Power Stroke X Lucy Boy X Hollywood Queene dam.
- They are highly fortified with prolific lineage, moderate-framed, nicely balanced, easy-fleshing brood cow prospects.
- Bred to calve March 2, 2013 to WLE SWAGGER, the reigning Reserve Grand Champion Bull at the 2012 National Western Stock Show.



EPDs	
BW	2.8
WW	56.8
YW	85.9
MK	15.8
API	125.0
TI	67.5

WLE Swagger – His Service Sells.

HORSTMAN CATTLE COMPANY 2012

# Wesner Livestock Enterprises

LOT  
**53**

## WLE BLACKBIRD Y547



EPDs	
BW	1.7
WW	56.4
YW	79.7
MK	16.1
API	107.4
TI	63.0

<b>Cow</b>	<b>3/4 SM 1/4 AN</b>	<b>DOB: 01/19/2011</b>
<b>ASA #: 2585109</b>	<b>Tattoo: Y547</b>	<b>Polled</b>

*Sire* **CNS DREAM ON L186**

**NICHOLS LEGACY G151**

**CNS SHEEZA DREAM K107W**

*Dam* **CANE RIDGEBLACKBIRD3201N**

**MEYER RANCH 734**

**O C C BLACKBIRD 846G**

- Owned by Wesner Livestock Enterprises, Chalmers, IN.
- Here is a baldy bred female that will gain the attention of the most discriminating cowboys. She's powerfully built with that extension, style and balance in a moderate package that makes her a blue chip genetic piece.
- Y547 was crowned the Grand Champion SimSolution Female at the 2012 Eastern Regional's in Mississippi. We have had many full sibs before her that have not only been show champions but also prolific producers.
- Wesner Livestock Enterprises feels that WLE Blackbird Y547 is the kind of female that has helped bring Simmental influenced seed stock in great demand across the country in many new circles. So buy Y547 with confidence as the guesswork is gone in this one.
- Bred to calve February 6, 2013 to SS EBONYS GRANDMASTER. Examined safe.



SS EBONYS GRANDMASTER – His influence sells.

CNS DREAM ON L186 – Sire of Lot 53.

# WBCC DIXIE ERICA 4228P

LOT  
**54**



EPDs	
BW	0.1
WW	42.9
YW	74.7
MK	22.7
API	97.2
TI	51.4

Cow	1/2 SM 1/2 AN	DOB: 03/13/2004
ASA #: 2254777	Tattoo: 4228P	Polled

<i>Sire</i>	HC POWER DRIVE 88H	WLE POWER STROKE
		KAPPES LADY IRISH F88
<i>Donor</i>	O C C DIXIE ERICA 722J	D H D TRAVELER 6807
		O C C DIXIE ERICA 743A

- Owned by Wesner Livestock Enterprises, Chalmers, IN.
- 4228P came to the Wesner Livestock Enterprises program as the high-selling open female from Cane Ridge Cattle Company. Her phenotype backs that transaction up. An own daughter of the famed HC Power Drive 88H and the renowned Ohlde donor 722J: this powerfully constructed moderate-framed, phenotypically pleasing cow's production capabilities are untapped.
- She had a WLE Right On steer calf that was successfully shown by the Casebere family, and her 2012 bull calf is a standout.
- This cow sells open and ready to flush. She was flushed in 2010 with 8 transferrable embryos by Built Right. She will be ready to start your mating immediately after the sale. Whether you are breeding cattle or club calf persuaded this investment is worth making.

# **BUCK CREEK SHOW LEVEL FEEDS**



We offer an extensive line of texturized and pelleted feeds that can be designed to meet your goals for both the show ring and commercial sectors.



**765-589-3335**

## Sale Information

### FACTORY DIRECT SALE LOCATION

707 E 900 N, West Lafayette IN, 47906

### SCHEDULE OF EVENTS

Thursday, October 11:  
(All Afternoon) All cattle arrive at HCC newly constructed sale facility

Friday, October 12th: Cattle available for viewing

Saturday Oct 13: Cattle available for viewing all day. Cocktails and "Harry's Chocolate Shop" Chili and Cocktails that night

Sunday Oct 14: 11:30 am. Lunch Served by Beutler Meats and Catering.  
1:30 pm Factory Direct Sale

\*\*\*Reminder\*\*\* Angus Connection in Niles Michigan and Belles of Bluegrass outside of Lexington Kentucky are both Oct 13th

### SALE DAY PHONES:

Joe Horstman 765 426 0426  
Dr. Larry Horstman 765 426 1064  
Randy Martin 765 412 3660  
Barry Wesner 219 863 4744  
Lance Sennett 765 366 4894  
Rob DeFreese 765 491 9352  
Dr. Robin Sheets 765 426 3398  
Steve Shoup 765 357 5281  
Dr. Jay Davis 765 438 4531

### AUCTIONEER :

Thomas Carper 540 336 2737  
IN License #AU11200059

### SALE STAFF:

Jerry Cassidy, American Angus Association 816 390 6603  
Jered Shipman, Special Assignment 806 983 7226  
Kent Jaecke, Special Assignment 405 408 2440

### SALE CONSULTANTS:

Brian DeFreese 765 491 7421  
Kevin Mears 937 533 0169  
Doug Parke 859 421 6100  
Dalton Lundy 502 727 6898  
Tyler Humphrey 419 230 3450



### ACCOMMODATIONS:

Note: this is a Purdue Football Homecoming weekend vs. Wisconsin. Make your Saturday night reservations early, Sunday should be fine.

- EconoLodge, West Lafayette 765 567 7100
- Courtyard Inn by Marriott, Lafayette 765 449 4800
- Fairfield Inn, Lafayette 765 449 0083
- TownPlace Suites, Lafayette 765 446 8668

You can also check the Remington IN area, which is 18 miles from our exit and the Frankfort IN area, which is 20 miles from our exit.

### AIR TRANSPORTATION:

Indianapolis International airport is one hour from the sale location, Chicago Midway is one hour and 45 minutes and O'Hare Airport in Chicago is 2 hours away and all are served by major airlines.

### LIABILITY:

All persons who attend this sale do so at their own risk, legal or otherwise, for their safety or for the behavior of the animals. The owners, sale management firm, and the slae staff assume no liabiity for property loss or any accident that may occur.

### HERD HEALTH:

All cattle will be accompanied by health certificates for immediate transport. Please discuss the vaccination program of each consignor with their representative.

### TRUCKING:

Can be arranged to central cities and provided on sale day by:  
Brent Williams, Bovine Bus 812 453 7548

### LIVESTOCK MORTALITY INSURANCE:

Jame Secondino-Krieger will be available on sale day to properly insure your investments. Jame's number is 812 208 0956.

### SUPPLEMENT INFO:

A supplemental sheet will be available sale day with complete and up to date calving information. Announcements from acution block regarding the cattle selling in this sale take precedence over information listed in this catalog.

**NOTE:** The seller reserves the right to one (1) flush or half of two (2) flushes at the seller's expense and the buyer's convenience as long as the new buyer owns that animal. This pertains to ALL females selling in this sale. This does NOT have to be exercised and often will not.



Sale is a video auction with live cattle on display on sale day and prior.

Catalog Produced By:

**EDJE**  
technologies

On the Leading EDJE of Innovation 866.839.3353

## Comments From The Sale Manager

On behalf of the American Angus Hall of Fame, it is certainly a pleasure to be working with Joe Horstman and Dr. Larry Horstman on their annual Factory Direct Production Sale. The Horstman family has been in the cattle business for many, many years and they represent integrity, hard work and reputable cattle that have withstood the test of time with genetics consisting of fleshing ability, maternal, structural correctness and phenotype.

Horstman Cattle Company has enjoyed extreme success in the show ring over the years including the Fourth Overall SimAngus heifer at the 2011 National Simmental Show along with being selected as the 2011 Grand Champion Cow/Calf Pair at the Breeders Sweepstakes Show. They also had the Reserve Grand Champion Percentage Female at the 2011

Indiana State Fair Open Show and have enjoyed many other successful outings along the way including winning Breeders Herd in the 2012 Simmental Breeders Sweepstakes, and T94 earned Produce of Dam 2012. The Horstman Cattle Company would like to thank their close friends and consignors in this year's first event including Locust Hill Farm, Sennett Cattle Company, Patton Farms, LLC, Sheets Chiangus and Wesner Livestock Enterprises for certainly putting their best foot forward and offering some of their most elite genetics within their given programs.

As you flip through the catalog, you will find an elite set of donor females along with an outstanding set of elite show heifer prospects from each of these consignors. These cattle are backed by breed-leading A.I. sires and the most prominent

cow families within the Angus, SimAngus, ChiAngus and Crossbred worlds.

We look forward to having an outstanding event, and please plan to be with us on Sunday afternoon, October 14, 2012 in West Lafayette, Indiana. If you have any questions, please feel free to contact us at the American Angus Hall of Fame at (816) 532-0811.



**Tom Burke**  
816 853 2697



**Kurk Schaff**  
816 520 6447



**Jeremy Haag**  
816 515 1309



Box 660  
Smithville, MO 64089-0660

Catalog Produced By:

**EDJE**  
**technologies**

On the Leading EDJE of Innovation 866.839.3353

# FACTORY DIRECT

*sale*

HORSTMAN  
**HC**  
CATTLE CO.

Sunday  
October 14th, 2012  
at 1:30 PM  
Held at Horstman Cattle Co.  
West Lafayette, Indiana